

22020 Benders Lane,
Sherwood, Maryland 21665



-Features Include-

- 128 acres with development potential
- Improved by a 10,525 sq ft residence
- First floor guest suite, second floor master with three additional guest rooms with baths en-suite
- Three bedroom guest house, stable, paddocks, sheds, ponds
- Pier with 6+ feet of water at mean low tide
- Broad views over Harris Creek and down the Choptank River. The farm has numerous sites to accommodate additional homes if subdivision or estate planning is in order
- 1,920 foot turf airstrip registered with the FAA
- Designed by the late architect, Alan Meyers.

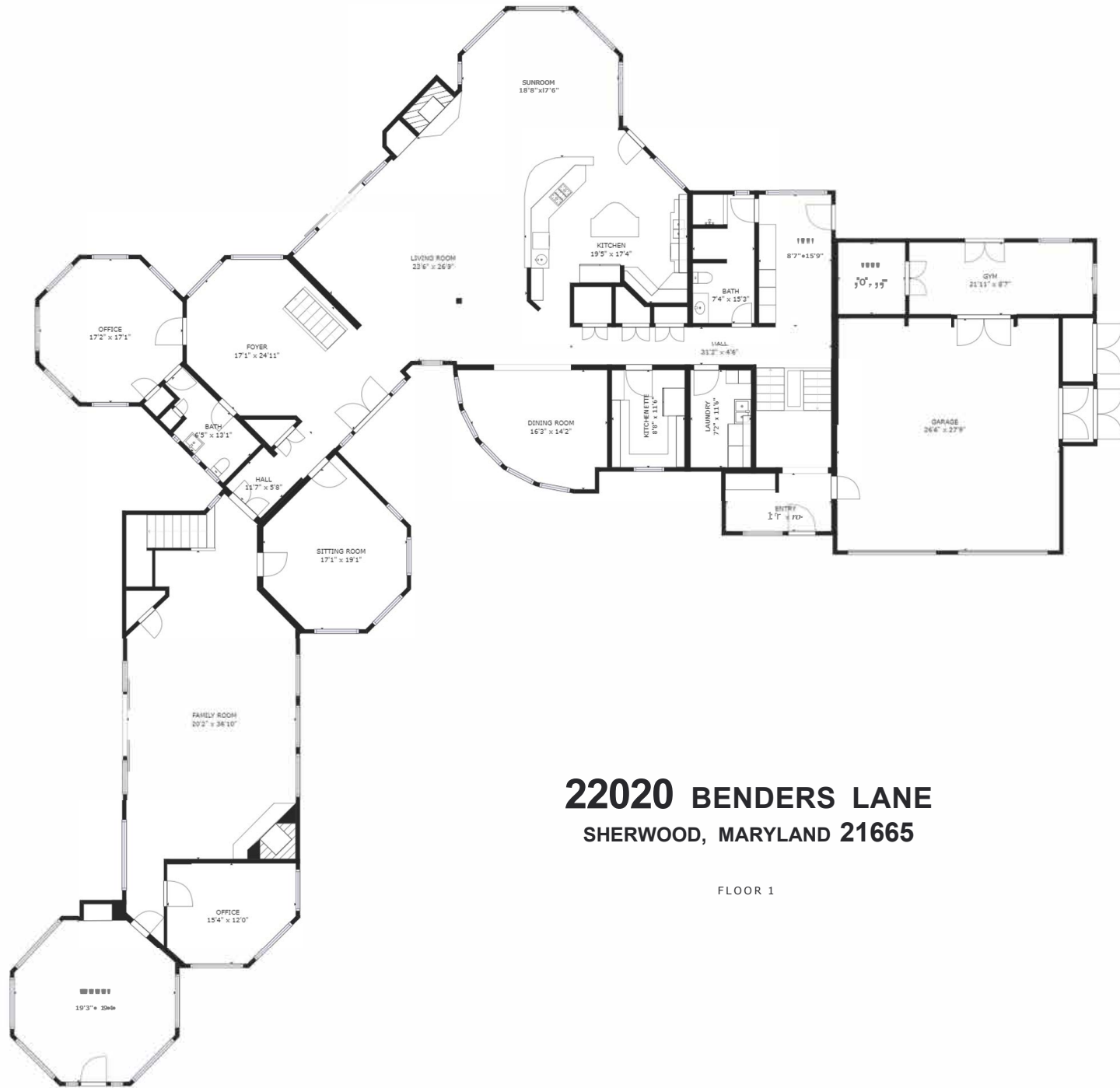
Price: \$5,350,000

Taxes: \$17,710

Description: 128.559 AC E S TILGHMAN RD

Deed: Liber 930, Folio 980

-All Information Contained Herein Believed Accurate but Not Guaranteed-



22020 BENDERS LANE
SHERWOOD, MARYLAND 21665

FLOOR 1